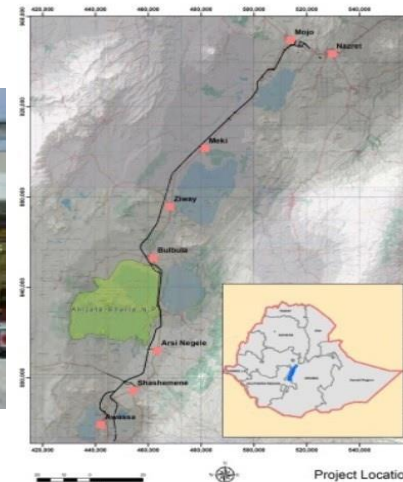




Review & Update of World Bank's Environmental & Social Safeguard Policies Phase 3 Consultation Meetings

Ethiopia Expressway Development Support Project



Review & Update of World Bank's
Environmental & Social Safeguard Policies
Phase 3 Consultation Meetings
Feb. 2016

**“Road Testing” the new ESSF--Project Case Studies:
what changes, what does not?**

- 1. What are the new requirements if any?**
- 2. What requirements are dropped, if any?**
- 3. Change in effort or expertise required?**
- 4. Added Value?**

Standard	Building on	Modernizing
ESS1: Assessment and Management of ESS Risks and Impacts	OP/BP4.01(Environmental Assessment)	Non-discrimination, adaptive management, time frame for compliance
ESS2: Labor and working conditions	OP/BP4.01 and EHS Guidelines	Prohibiting child labor and forced labor, focus on OHS, grievance mechanism
ESS3: Resource Efficiency and Pollution Prevention	OP4.09 (Pest Management) and EHS Guidelines	Efficient management of energy, water, and other resources and materials
ESS4: Community Health and Safety	OP/BP4.37 (Safety of Dams) and EHS Guidelines	Focus on risks and impacts on communities through design and safety of infrastructure, equipment, products, services, traffic, and hazardous materials
ESS5: Land Acquisition, Restrictions on Land Use and Involuntary Resettlement	OP/BP4.12 (Involuntary Resettlement)	Greater clarity on treatment of state land, land titling, access to common resources, voluntary transactions, force evictions
ESS6: Biodiversity Conservation and Sustainable Management of Living Natural Resources	OP/BP4.04 (Natural Habitats) and OP/BP4.36 (Forests)	Requirement to assess and mitigate impacts on biodiversity
ESS7: Indigenous Peoples	OP/BP4.10 (Indigenous Peoples)	Clearer definitions, introduction of FPIC in specified circumstances
ESS8: Cultural Heritage	OP/BP4.11 (Physical Cultural Resources)	Adopt chance find procedure, enhanced consultation with affected communities
ESS9: Financial Intermediaries	OP/BP 4.01	Establish E&S procedures commensurate with FI nature, risk level and impact
ESS10: Information Disclosure and Stakeholder Engagement	Consolidates WB engagement provisions	Meaningful consultation, access to information and grievance redress

Project objective: to enhance efficiency and safety in the movement of goods and people along the Zeway-Arsi Negele section of the Modjo-Hawassa development corridor, whilst strengthening the Recipient's institutional capacity to develop and manage high capacity highways and expressways

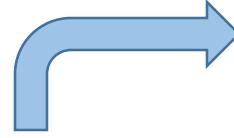
Project description:

Component 1. Construction of High Capacity Highway: (i) construction of Zeway to Arsi Negele section of the new Modjo - Hawassa Highway; (ii) road safety improvements at potential accident sites on the trunk road network and piloting road safety actions along the high capacity highway and expressway network; (iii) installation of Intelligent Transport Systems (ITS), on the new Modjo-Hawassa highway and enhancing ITS on the expressway network.

Component 2. Institutional Development and Regulatory Framework including strengthening of capacity for operation and maintenance, and studies for preparing follow on operations (including feasibility studies and ESIAs)

Component 3. Road Safety and Institutional Development Support to the Transport Sector

From Safeguards to E&S Standards



CATEGORY A



**SUBSTANTIAL
(MODERATE?)
RISK**

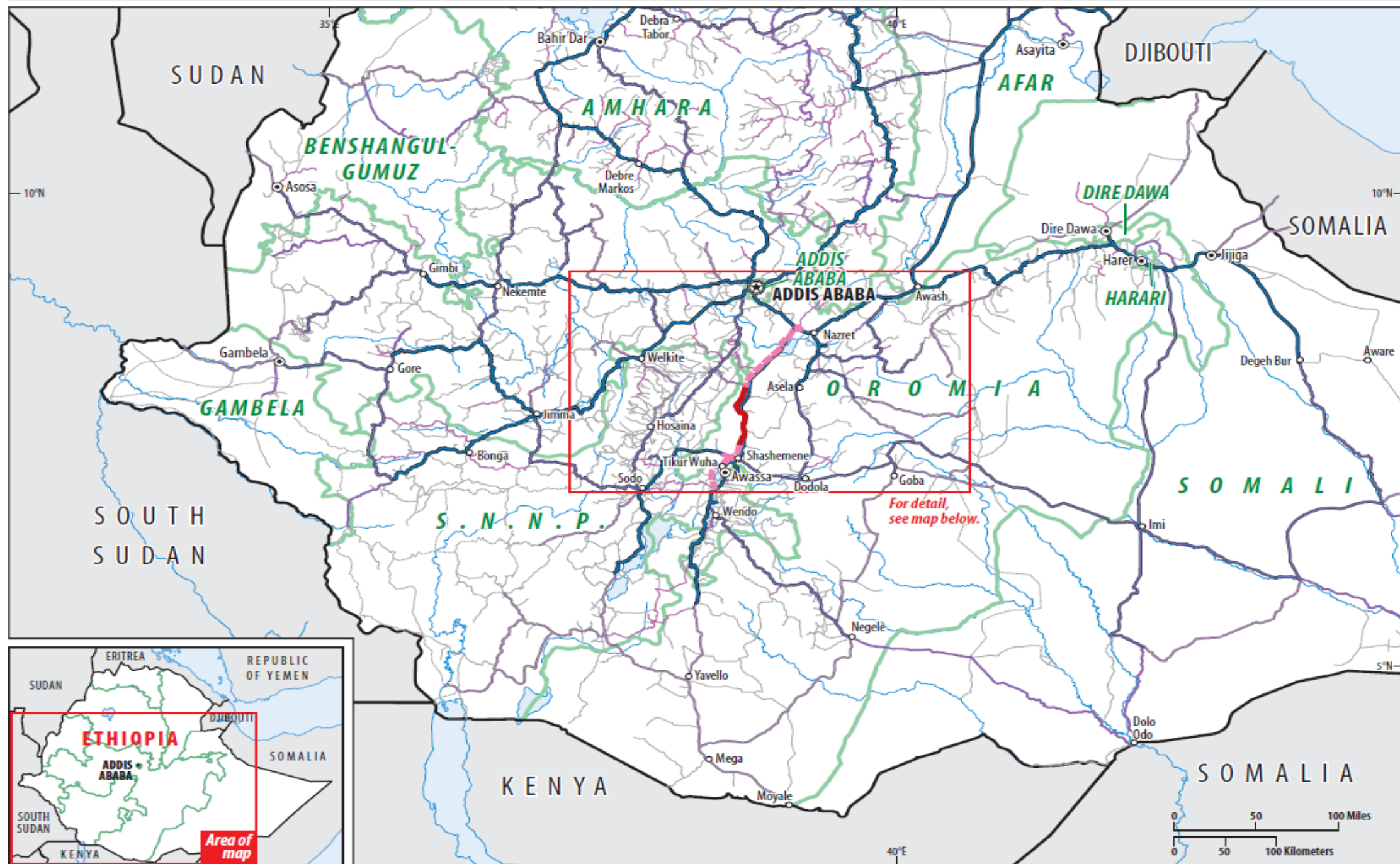
SAFEGUARDS POLICY	
4.01 ENVIRONMENTAL ASSESSMENT	✓
4.04 NATURAL HABITATS	✓
4.36 FORESTS	✓
4.09 PEST MANAGEMENT	
4.11 PHYSICAL CULTURAL RESOURCES	✓
4.37 SAFETY OF DAMS	
7.50 PROJECTS ON INTERNATIONAL WATERWAYS	
7.60 PROJECTS IN DISPUTED AREAS	
4.12 INVOLUNTARY RESETTLEMENT	✓
4.10 INDIGENOUS PEOPLES	

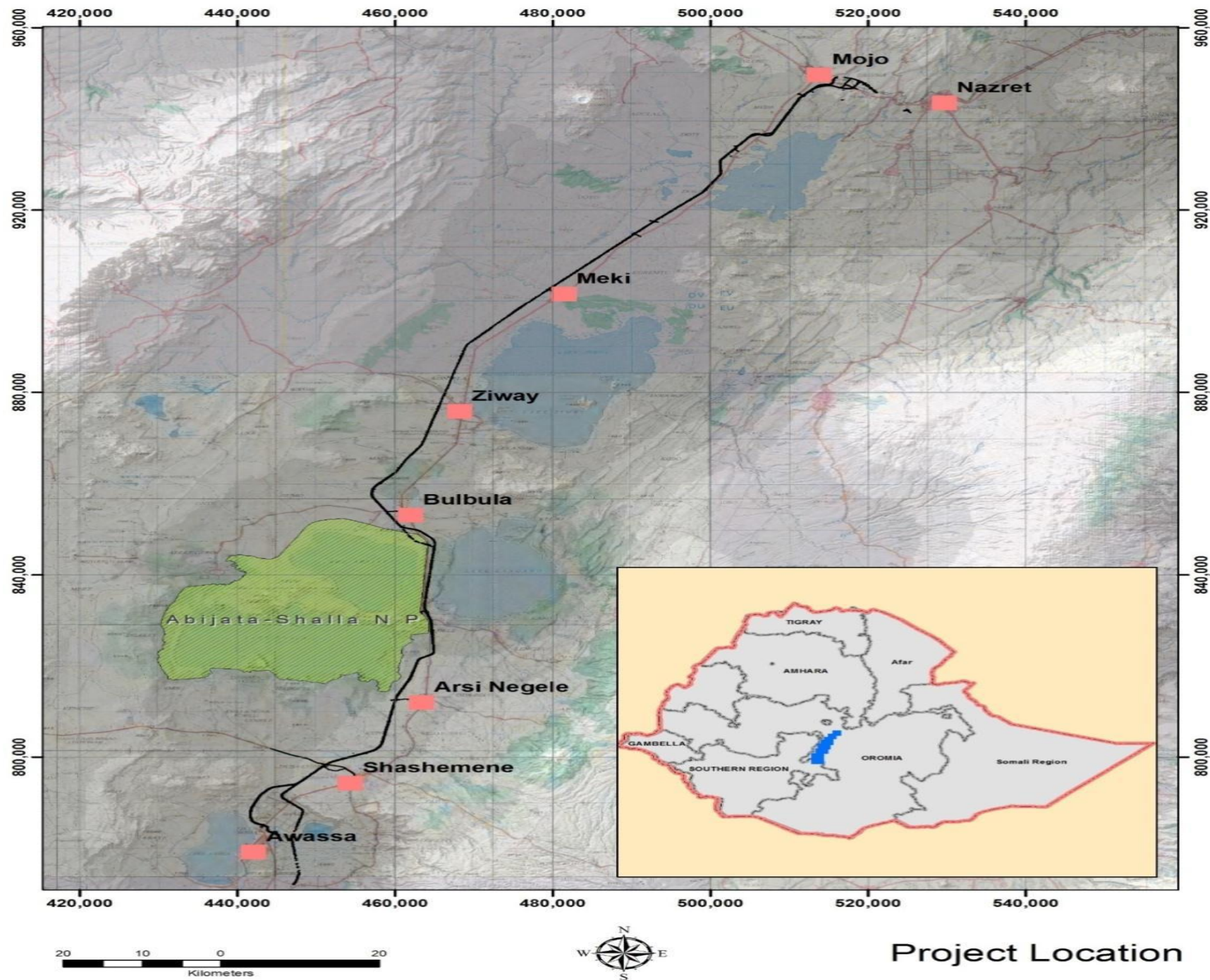
ESS STANDARD	Specific Applicability to Talimarjan TL Project
ESS1: Assessment and Management of ESS Risks and Impacts	✓
ESS2: Labor and working conditions	✓
ESS3: Resource Efficiency and Pollution Prevention	✓
ESS4: Community Health and Safety	✓
ESS5: Land Acquisition, Restrictions on Land Use and Involuntary Resettlement	✓
ESS6: Biodiversity Conservation and Sustainable Management of Living Natural Resources	✓
ESS7: Indigenous Peoples	
ESS8: Cultural Heritage	✓
ESS9: Financial Intermediaries	
ESS10: Information Disclosure and Stakeholder Engagement	✓

shown on this map do not imply, on the part of The World Bank Group, any judgment on the legal status of any territory, or any endorsement or acceptance of such boundaries.

--- NEW PROPOSED
--- UNCLASSIFIED

— INTERNATIONAL BOUNDARIES





Implementation of Safeguard Policies (actual)

OP 4.01:

- Category A project. Entails green-field alignment to a 4 lane dual carriageway standard. New constructions of pavement layers and other road components such as bridges, culverts, underpasses, overbridges and construction of ancillary works.
- Part of the Corridor Addis Ababa-Moyale-Nairobi-Mombasa Corridor, which is of strategic importance to diversify Ethiopia's international links and sea port outlets
- Some 202 km of new roads divided into 4 Lots. World Bank is financing Lot 3. Other lenders are ADB and the China and Korea EXIM Banks.
- ESIA, and EMP were prepared for each of the 4 lots and reviewed by World Bank. Four design options were considered, including the do-nothing option.
- Generic impacts include: removal of vegetation; increased soil erosion; taking of farm land, dwellings and other properties; pollution of water resources; soil contamination; noise and air pollution, traffic accidents, increased risk of HIV/AIDS, occupational health and safety, labor force housing, and quarry and borrow site operation and various ancillary activities during the project implementation

OP 4.04: Lot 3 of the project road is located parallel to and on the west side of the Abiyata Shala Lakes National Park. The park engulfs Lakes Abjata, Shalla and Chitu covering a total area of about 887 sq. km. The park provides habitat for endemic bird and mammal species and protects the remaining acacia woodland forest. Risks (road kill, disturbance of wildlife and nesting grounds, increased poaching) is identified in ESIA and addressed via EMP and road alignment.

OP 4.36: The impact of the construction on the woodland and forests has been assessed in ESIA. Measures include tree planting to offset the potential damage that will occur to the woodlands trees along the periphery of the Right-of Way. The ESIA/EMP (and provisions for contractors) also address how the tree plantation should be managed.

Implementation of Safeguard Policies (actual)

OP 4.11: Triggered as a precaution. The project ESIA acknowledges that Oromo burial grounds maybe encountered in the project area and includes procedures for handling this as well as identification and management of other chance finds. “Chance Find” procedures are also included in the contract documents.

OP 4.12:

The Resettlement Action Plan (RAP) is prepared for the entire Modjo-Hawassa road in 4 lots. The RAP are intended to ensure that Project Affected Persons (PAP) receive appropriate compensation, or livelihood restoration or income restoration measures and/or rehabilitation measures.

The project will fully and partially affect an estimated 3,574 households (HH) with a total of 24,030 project PAP, of which 651 HH and 4,103 PAP are in the Bank financed section (Lot 3). Potential quarry sites, borrow material and spoil sites were identified and included in these numbers.

The highway alignment will be fenced and the design includes provision for pedestrian and animal underpasses at regular intervals. Further, to minimize resettlement and impact on the environment, extensive changes have been made during project design.

ESS1: Assessment & Management of E & S Risks & Impacts

New Requirements/Approaches?	Actual (under WB Ops)	Changes, additional effort/expense under ESSF	Value?
Use of Borrower's E & S System to the extent possible	Not done	Borrower may request, WB approve in whole or in part	
E & S Assessment	Integrated environmental and social assessment (including community health and safety);	ESIA include assessment of potential for specific community benefits; Non-quantitative assessment of greenhouse gas emissions (see ESS3)	
E & S Commitment Plan	EMP based on ESIA (transcribed into the Works contract documents, and where necessary into the TORs of the supervision and monitoring engineers)	Time-bound ESCP covering life of project, emphasis on monitoring and adaptive management	
Project Monitoring & Reporting	Requirements throughout life of project	ESCP likely with broader range of monitoring, explicit provisions for adaptive management based on monitoring results	
Stakeholder Engagement & Info Disclosure	Public consultations on Safeguards documents (ESIA, RAP)	Preparation and implementation of Stakeholder Engagement Plan, Borrower reporting to public and WB throughout life of project	

ESS2: Labor & Working Conditions

New Requirements?	Actual (under WB Ops)	Changes, additional effort/expense under ESSF	Value?
Working Conditions & Management of Worker Relationships	No explicit requirements beyond routine OHS requirements in contracts	Explicit requirements and Borrower responsibilities relating to relationship between contractors/subcontractors and workers	
Protecting the Work Force	No explicit requirement	Explicit requirements relating to non-discrimination; child/forced labor	
Grievance Mechanism	Only in RAP	For all aspects of project; separate GM for workers	
Occupational Health & Safety (OHS)	General OHS included in ESIA, EMP (and contractor obligations)	Explicit requirements for WBG Env Health & Safety Guidelines	
Contracted Workers	General OHS provisions in contracts	Expanded requirements in contracts; application to subcontractors; enhanced Borrower responsibility for monitoring	
Workers in Community Labor	No requirement	Expanded requirements: ascertain voluntary basis; Working Conditions & Management of Worker Relationships and OHS apply in proportionate manner	
Primary Supply Workers	No requirement	Ascertain significant risk of harmful child labor or forced labor	11

ESS3: Resource Efficiency & Pollution Prevention & Management

New Requirements?	Actual (under WB Ops)	Changes, additional effort/expense under ESSF	Value?
Resource Efficiency	No requirement	Explicit consideration of opportunities to enhance energy efficiency	
Pollution Prevention & Management	ESIA and EMP address prevention of water and soil pollution, safe handling of materials, disposal of waste	GHG emissions estimation?	

ESS4: Community Health & Safety

New Requirements?	Actual (under WB Ops)	Changes, additional effort/expense under ESSF	Value?
Community Health & Safety	ESIA and EMP identify and address potential impacts of construction and operation incl. traffic accidents, HIV/Aids, malaria, dust and noise, loss of access and connectivity	Consideration of other potential impacts, e.g. communicable & non-communicable diseases (?) Emergency plan (?)	
Security Personnel	No requirement		

ESS5: Land Acquisition, Restrictions on Land Use & Involuntary Resettlement

New Requirements?	Actual (under WB Ops)	Changes, additional effort/expense under ESSF	Value?
General	Preparation of RAP prior to Appraisal	ESCP specifies preparation/implementation of RAP prior to land acquisition for project purposes (RPF or RAP still required prior to WB Board approval?)	
Displacement	RAP covers physical & economic; permanent and temporary displacement	No change	
Collaboration with Other Responsible Agencies or Subnational Jurisdictions	RAP describes responsibilities of PIU, local authorities	ESCP might require more explicit, written agreements among parties involved in land acquisition	
Technical & Financial Assistance	RAP describes requirements for capacity strengthening	ESCP might specify time-bound assistance to strengthen Borrower capacity, with costs and monitoring provisions	

ESS6: Biodiversity Conservation & Sustainable Management of Living Natural Resources

New Requirements?	Actual (under WB Ops)	Changes, additional effort/expense under ESSF	Value?
General	<p>EIA identified potential impacts on Protected Area/Park (birds, mammal, and Acacia trees)</p> <p>Route selected to avoid direct impact on Park</p> <p>EMP includes mitigation measures to prevent road kill and illegal poaching. Replanting of trees.</p>	<p>ESIA considers potential biodiversity impacts in modified habitat; ecosystem services</p> <p>ESCP to specify adaptive management strategy based on monitoring results; might include preparation of a time-bound, costed Risk Management Plan</p>	
Primary Suppliers	No requirement	Screening primary suppliers for commodities known to originate from locations or areas with a risk of significant conversion or degradation of critical habitats	



ESS7: Indigenous Peoples

New Requirements?	Actual (under WB Ops)	Changes, additional effort/expense under ESSF	Value?
General	Not applicable	Not applicable	
Circumstances Requiring Free, Prior & Informed Consent (FPIC)			
Mitigation & Development Benefits			
Grievance Mechanism			
Indigenous Peoples & Broader Development Planning			

ESS8: Cultural Heritage

New Requirements?	Actual (under WB Ops)	Changes, additional effort/expense under ESSF	Value?
General	ESIA considers potential for impact (graves). Chance find procedures in EMP and contracts for Works	EIA would consider potential for impact on intangible cultural heritage (unlikely to be an issue)	
Stakeholder Consultation & Identification of Cultural Heritage	ESIA/EMP prescribes consultations in case of chance find of burial grounds	Meaningful consultations to identify cultural heritage that maybe impacted, assign value and develop mitigation measures	
Legally Protected Cultural Heritage Areas	Not relevant	Not relevant	
Provisions for Specific Types of Cultural Heritage	No requirement	Documentation and conservation (finds from archeological sites)	
Commercialization of Cultural Heritage	Not relevant		

ESS9: Financial Intermediaries

New Requirements?	Actual (under WB Ops)	Changes, additional effort/expense under ESSF	Value?
FI Environmental & Social Procedures	Not applicable 	Not applicable 	
Stakeholder Engagement			
Reporting to the Bank			

ESS10: Stakeholder Engagement & Information Disclosure

New Requirements?	Actual (under WB Ops)	Changes, additional effort/expense under ESSF	Value?
Engagement during Project Preparation	Public consultations on Safeguards instruments	Preparation of Stakeholder Engagement Plan, covering life or project ;	
Engagement during Project Implementation & External Reporting	Operation and disclosure of Grievance Mechanism in relation to land acquisition	Implementation of SEP; Regular reporting to public and WB on implementation	
Grievance Mechanism	Relating to RAP only	Covering all aspects of project; separate GM for workers	
Organizational Capacity & Commitment	Capacity building elements in EMP	ESCP to specify detailed, time-bound implementation and associated capacity building plan	

Operational Implications of Proposed Framework:

Borrower: overall low incremental change in scope of work and resources; decreasing marginal costs as capacity increases

Bank: similar low incremental change

Environmental and Social Standard	Prospective Change in Effort/ Resources
ESS 1: Assessment and Management of Environmental and Social Risks and Impacts	Moderate to Substantial
ESS 2: Labor and Working Conditions	Moderate to Substantial
ESS 3: Resource Efficiency and Pollution Prevention and Management	Low
ESS 4: Community Health and Safety	Low
ESS 5: Land Acquisition, Restrictions on Land Use and Involuntary Resettlement	Low to None
ESS 6: Biodiversity Conservation and Sustainable Management of Living Natural Resources	Low
ESS 7: Indigenous Peoples	None
ESS 8: Cultural Heritage	Low to None
ESS 9: Financial Intermediaries	None
ESS 10: Stakeholder Engagement and Information Disclosure	Moderate